



the **evō** system™

Home theater system kits

Package #1



Includes

- 3 High x 3 Wide Frame + Panels
- 3 Double Attachment 16" Deep Shelves
- 1 42" - 65" Tilting LCD/Plasma Mount
- 3 Pack Satellite Speaker Mounts
- 1 Wire Management Kit

Package #2

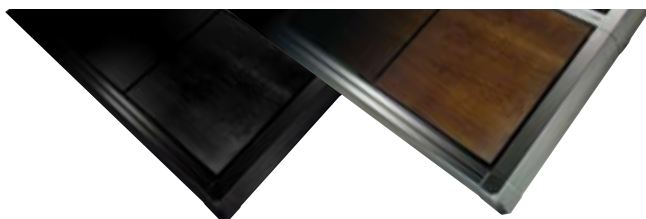


Includes

- 4 High x 4 Wide Frame + Panels
- 4 Double Attachment 16" Deep Shelves
- 1 42" - 65" Tilting LCD/Plasma Mount
- 3 Pack Satellite Speaker Mounts

Panel and Frame Color Options

FRAME



Black

Silver

PANEL



Black Ash

Maple

Walnut